

GB

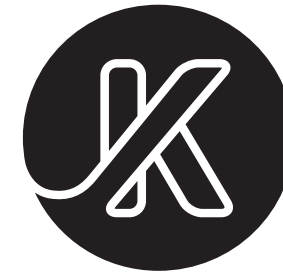
GB

GE

Imported by:
MAF CARREFOUR GEORGIA
TRADE CENTER CHEMI SAKHLI
TERRITORY OF DIGOMI
EDUCATIONAL & EXPERIMENTAL FARM
TBILISI 0131 GEORGIA

IN

Carrefour W C & C India Pvt Ltd,
2nd Floor Park Centra,
Sector 30 Village Silokhra,
Gurgaon - Haryana 122001
India.



klindo

KAP20-17

Important safety instructions

PLEASE READ THE FOLLOWING INSTRUCTIONS CAREFULLY BEFORE USING THE APPLIANCE. READ AND SAVE THESE SAFETY INSTRUCTIONS BEFORE USING THIS AIR PURIFIER

Warning :

- This appliance can be used by children aged from 8 years and above and persons with reduced physical, sensory or mental capabilities or lack of experience and knowledge if they have been given supervision or instruction concerning use of the appliance in a safe way and understand the hazards involved. Children shall not play with the appliance. Cleaning and user maintenance shall not be made by children without supervision.
- If the supply cord is damaged, it must be replaced by the manufacturer, its service agent or similarly qualified persons in order to avoid a hazard.
- Regarding how to clean the **air purifier** surfaces in contact with hand and skin, please refer to section “CLEARNING and MAINTENANCE”.

When using electrical appliances, basic precautions should always be followed to reduce the risk of fire, electric shock, and injury to persons, including the following:

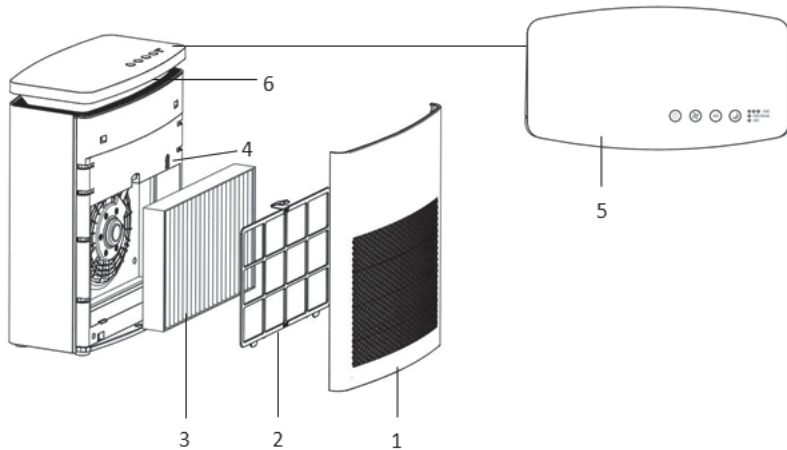
- Read all instructions before operating the air purifier.
- Always turn the air purifier controls to the OFF position and unplug from the wall outlet when not in use.
- Do not use any product with a damaged cord or plug or if product malfunctions, is dropped or damaged in any manner, Keep the cord away from heated surfaces.
- Do not use air purifier outdoors.
- Never use air purifier unless it is fully assembled.
- Do not expose the air purifier to rain, or use near water, in a bathroom, laundry area or other damp location.
- The air purifier must be used in its upright position.
- Do not allow foreign objects to enter ventilation or exhaust opening as this may cause electric shock or damage to the air purifier, Do not block air outlets or intakes.

- Do not sit, stand or place heavy objects on the air purifier.
- Prior to cleaning or other maintenance, the appliance must be disconnected from the supply mains.
- An alternative format of this instruction manual is available upon request to the Carrefour Customer Service.
- **SAVE THESE INSTRUCTIONS.**

Congratulations

Congratulation on your purchase. For a better use of your new device, we recommend you to read carefully this user manual and keep it for record.

Your air purifier



1. Front Cover
2. Pre-Filter
3. Compound (HEPA + Carbon Two in one) Filter
4. Dust Sensor
5. Control Panel
6. Air quality indicator

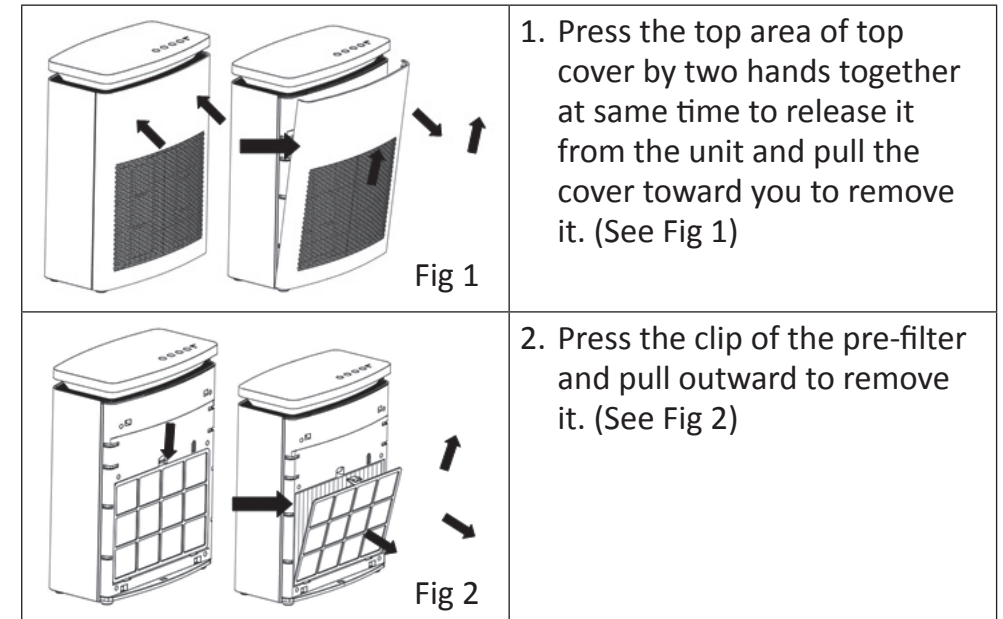
KAP20-17

• Voltage:	230V~ 50Hz
• Wattage:	35W
• Unit size:	35.6*19*46(cm)
• N.W:	5KG
• CADR:	190m ³ /h

Set-up

1. Select a firm, level and flat location.
2. Make sure the air purifier is OFF and unplugged before install the filter.
3. Before using your new air purifier you must remove the wrappers covering the compound filter which supplied with the air purifier.
4. Ensure the front of the unit faces away from the closest wall or furniture.

⚠️ Pls follow below process to install:



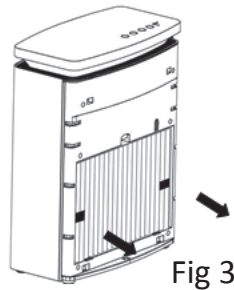


Fig 3

3. Grasp the tabs of the filter and pull outward to remove it. Remove protective wrap from the filter. (See Fig 3)

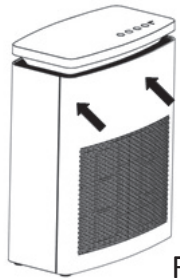
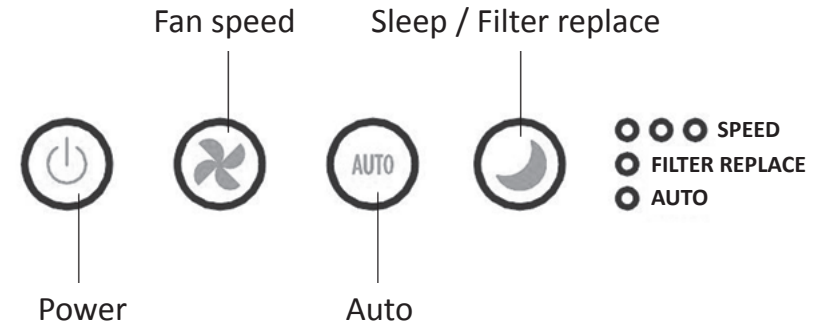


Fig 4

4. Place the compound filter into the air purifier housing, Ensure that the removal "front" tabs are facing outward, Place the Pre-filter on top of the compound filter. Replace the front cover by placing the tabs on the bottom of the front cover into the slots on the unit, Gently push the top of the front cover into place by pressing to secure in place. (See Fig 4)

- Air quality light:
Blue - Good
Purple _ Medium
Red -- Bad



	Tap \ symbol for on / off.
	Tap symbol , Blue "AUTO" LED light will illuminate, It will auto to select the fan speed base on the air quality in the room.
	Select the desired cleaning level by simply Tapping the symbol to setting options, Blue "SPEED" LED light will illuminate the selected setting 1. blue LED light illuminate: Low 2. blue LED light illuminate: Medium 3. blue LED light illuminate: High
	Tap symbol, Fan speed will auto setting in low speed, All lights will be off except low speed LED light is a little brightness.

Operation

- Portable air purifier are more effective in rooms where all doors and windows are closed, In general, It is recommended that you run air purifier while you are at home to clean the air.
- Once the filter have been unwrapped and replaced in the unit, Plug the power cord into a working electrical outlet.
- When unit is on, It will tacitly approve in Auto mode, It will show real air quality after 3 times air quality light alternately flash checking.

Filter replace reminder


The air purifier have filter check to remind you when to check and replace the compound filter based on the air purifier's hours of use. When the filter need to be replaced, The blue "FILTER REPLACE" light will illuminate.

Suggest replace timeline

Filter type	Suggest using time	Action
Pre-filter	2 weeks	Washable
Compound filter	12 months	Replace

- You should periodically check these filters, Depending on operating conditions especially if there have been heavy odors and particles in the home.

To reset filter check

After you have replaced the filter, The "FILTER REPLACE", light will remain on until it is reset, With the unit powered on, Press  button and hold for approximately 3 seconds until the light turns off.

Cleaning and storage

We recommend that you clean the air purifier at least once every 3 months and before extended storage.

Use only a dry cloth to wipe the external surfaces of the air purifier.

DO NOT USE WATER, WAX POLISH OR ANY CHEMICAL SOLUTION.

If your air purifier will not be used for more than 30 days, We recommend that you:

Remove the pre-filter from the unit and wrap it in an air tight plastic bag.

Remove the compound filter from the unit and place it in an air tight plastic bag.

Frequently asked questions

1. My air purifier is starting to make noise and the air output is less, What is wrong?
The filters may be dirty, High amounts of contaminates can block the pores in the filter and stop the air from moving through it, Replace the Filters.
2. How long should I run my air purifier?
In general, the unit will be most effective when doors and windows are closed, It is recommended that you run your air purifier while you are at home to clean the air.

Trademarks

Klindo is a registered trademark of Carrefour group. All other company names are trademarks, registered trademarks or service marks of their respective owners.

Recycling

Processing of electric and electronic equipment at the end of their service life (applicable in member countries of the European Union and other European countries operating a selective waste collection system). This symbol, affixed to the product or its packaging, indicates that the product must not be processed with household waste. It must be brought to an electric and electronic waste collection point for recycling and disposal. By ensuring the appropriate disposal of this product you also help in preventing potentially negative consequences for the environment and human health. The recycling of materials helps preserve our natural resources. For further information regarding the recycling of this product, please contact your municipality, local waste disposal centre or the store where the product was purchased.



Net Weight: 5kg

Additional Information

An alternative format of this instruction manual is available upon request to the Carrefour Customer Service.